

☀ 3 DAYS C2 NIGHTS
13TH-FEB TO 15TH-FEB

DARE 2 GEAR
— ADVENTURE REDEFINED —

GOLDEN TRIANGLE ODYSSEY

DELHI — DAY 1 — JAIPUR — DAY 2 — AGRA — DAY 3 — DELHI



ATOAI
ADVENTURE TOUR OPERATORS
ASSOCIATION OF INDIA
ALLIED

MSME
MICRO, SMALL & MEDIUM ENTERPRISES
सूक्ष्म, लघु एवं मध्यम उद्यम
OUR STRENGTH • हमारी शक्ति
Ministry of MSME, Govt. of India

Google

4.8 ★★★★★



TABLE OF *Contents*



01

About Us

02

Brief Itinerary

03

Detailed Itinerary

04

Inclusions & Exclusions

05

Costing

06

Payment & Cancellation

07

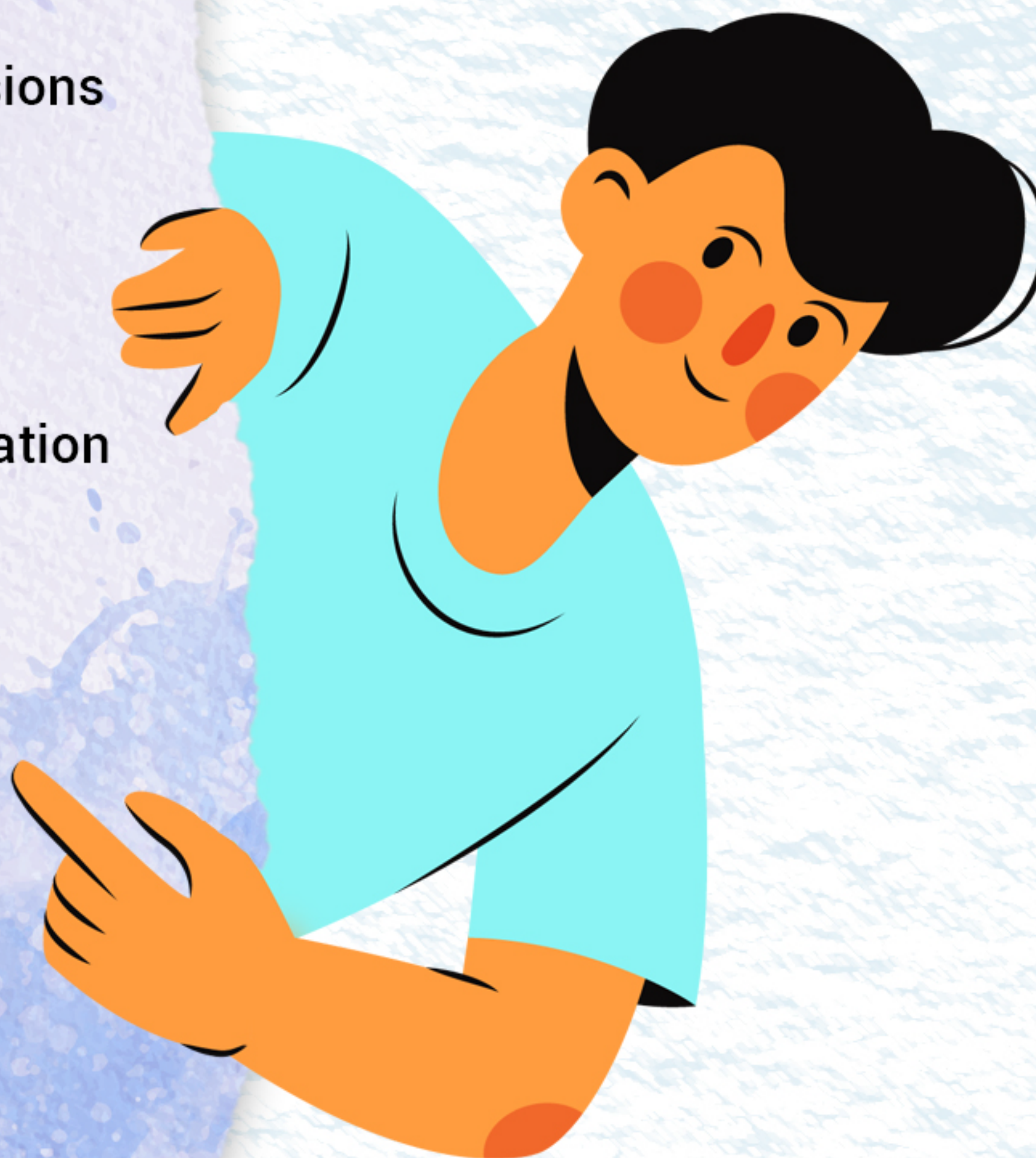
Booking Process

08

FAQ

09

Must Know



OVERVIEW

Embark on the Golden Triangle Odyssey, a unique and time-bound event crafted for riders seeking to test their endurance and ride against the clock. Unlike traditional races, this journey is not about disqualifications or competition but rather a personal exploration, an opportunity to discover new dimensions of oneself.

In this ride, a defined timeline for each day and the entire distance adds an element of challenge to the adventure. This tour is tailored for those who relish spending extended hours in the saddle, allowing them to closely explore the world around them.

The Golden Triangle, renowned globally, serves as the backdrop for this exhilarating circuit. As riders navigate through this popular route, they will bear witness to India's rich heritage, making the journey not just about conquering distances but also immersing in the cultural tapestry unfolding along the way. Join us for an unforgettable experience that transcends the typical tour, offering a unique blend of self-discovery and exploration.



WHY

Travel

WITH D2G



DARE2GEAR YOUR GATEWAY TO ADVENTURE!

At D2G, our foundation is built on trust, care, and positive vibes. We prioritize the well-being of our community, ensuring warm welcomes, safety, and environmental responsibility. Join us for an authentic experience where your journey matters not just to you but to the world around you.

We motivate each other, seize opportunities in new ideas, and believe that learning is a journey worth taking. Embark on a journey where every call is answered, every moment is crafted, and every adventure leaves you transformed.



300+ Community
Rides



400+ Weekend
Trips



100+ Corporate
Trips



4.8 Reviews
on Trip Advisor



Year of
Experience



24X7
Support



Health
& **Hygiene**

Brief Itinerary

Day 1: 
INDIA GATE TO JAIPUR / 270KM



Day 2:
JAIPUR to AGRA / 230KM



Day 3:
AGRA to DELHI / 210KM

★ DETAILED *Itinerary* ★

DARE GEAR
— ADVENTURE REDEFINED —



DAY 1:

INDIA GATE TO JAIPUR
REPORTING TIME: 5 AM, FLAG OFF: 6 AM
RIDE DISTANCE: 270KM ROUTE: INDIA GATE DELHI
– GURGAON – NEEMRANA – KUKAS – JAIPUR

- ☀ On this day you are supposed to report at 5:00 AM at INDIA GATE. Here, the bike check will be done. You will be introduced to the on-ground team that will be giving you support during the entire event.
- ☀ On route, you will get breakfast after a 40 km ride from the start point. Today's lunch point is at Lily Restaurant Dhaba which is at 150 km from our start point.
- ☀ For technical and hydration support on the entire route, our motorbike Marshall will be there during the entire ride.
- ☀ Our first pit point will be 40 km from India Gate where you will get nutrition support.
- ☀ Then post 20 km breakfast boxes shall be provided to each participant to consume more carbs and proteins for energy to ride. Then after every 30 km, our nutrition support vehicle will be there to provide you with energy support.
- ☀ The ride will adhere to the planned schedule, with continuous hydration and nutrition support.
- ☀ Upon reaching the final destination after covering 270 km, a welcome drink will be served.
- ☀ Participants will be assigned rooms for rest, allowing time to freshen up before regathering for dinner.
- ☀ Following dinner, you can retire for a sound and restorative sleep in preparation for the next day's ride.



DAY 2:

JAIPUR TO AGRA | 7:00 AM
RIDE DISTANCE: 265KM
ROUTE: JAIPUR – DAUSA –
MEHANDIPUR – BHARATPUR – AGRA

- ☀ Wake up early at 5:30 am, freshen up, pack your bags, test your cycles, and savor a delightful breakfast.
- ☀ Following breakfast, we will commence our journey for the day around 7:00 am.
- ☀ Given that today is a long day, time management is crucial.
- ☀ By now, you would have discovered your strengths and riding partners, allowing you to maximize your time on the saddle.
- ☀ Our technical and hydration support will accompany you throughout the ride on the bike. Nutrition support stations will be available every 30 km.
- ☀ Today's lunch stop is at Chaudhary Dhaba, situated 140 km from our hotel.
- ☀ Exiting Jaipur, you will encounter slightly elevated roads and traverse a captivating tunnel, adding a thrilling element to your journey near Jaipur city.
- ☀ The highway en route is two-lane, and with no street lights available, ensure your lights and reflectors are installed, as they will be indispensable towards the end of today's ride.



DAY 3:

AGRA TO DELHI | 7:00 AM
RIDE: DISTANCE: 215KM
ROUTE: AGRA – MATHURA –
KOSI -FARIDABAD – DELHI

- ☀️ Rise early at 5:30 am, freshen up, pack your bags, test your cycles, and relish a hearty breakfast.
- ☀️ After breakfast, we will set out for the day around 7:00 am.
- ☀️ Today's ride includes a slight elevation as Jaipur boasts short height mountains.
- ☀️ On this leg of the journey, you will traverse the most scenic stretch, witnessing the historical beauty and architecture of the Taj Mahal.
- ☀️ After covering 100 km, riders can refuel at ASLI PAPU Dhaba, indulging in delicious and tasty food for lunch.
- ☀️ Technical and hydration support will accompany you on the bike, with nutrition support available every 30 km.
- ☀️ The route follows a two-lane highway, but with no street lights, ensure your lights and reflectors are in place, especially as you approach the conclusion of your ride for the day.
- ☀️ Expect truck traffic on this highway, so ride in groups and don your safety gears.
- ☀️ Upon reaching India Gate, a warm welcome awaits, and the ride will culminate with each rider being presented a trophy to commemorate this prodigious journey.

Inclusions

- Hotel Stay – 4 star
- Photography / Videography
- Breakfast- 3
- Dinner- 2
- Support Vehicle
- Luggage carrying Support
- Hydration/Nutrition Support
- Technical/Mechanical Support
- Ride Marshal
- Medal

Exclusions

- Anything which is not mentioned above





COSTING

Per Person

BATCH DATE

FEBRUARY

13-FEB TO 15-FEB 2026

Price From:

Rs.15,990 /-*Per Person


*5% GST applicable

ADD ONS

- Single Stay - ₹7196
- Cycle On Rent - ₹5990



OUR ASSOCIATIONS



WELLNESS PARTNER

REHAB PARTNER



PIONEER YOGA STUDIO



ANODYNESPINE
FITLIFE CLINIC

ANODYNESPINE

PAYMENT Policy

	Upto 30 Days	29-21 Days	20-15 Days	14-07 Days
Booking Amount	✓	✓	✓	✓
50% Payment	Optional	Mandatory	✗	✗
75% Payment	Optional	Optional	Mandatory	✗
100% Payment	Optional	Optional	Optional	Mandatory

CANCELLATION Policy

Amount	Upto 30 Days	29-21 Days	20-15 Days	14-07 Days
Batch Shifting	✓	✓	✓	✗
Future Credit	100%	75%	50%	25%
Cash Refund	90%	50%	25%	NIL

Note: *All refunds shall be initiated on tour cost excluding GST charges.

BOOKING *Process*

BANK DETAILS:

Bank Name: IDFC

Name: Dare2Gear Enterprises

Ac/no: 10066529057

IFSC CODE: IDFB0020151

Branch: Noida Sector 18 GB Nagar



UPI ID: vrnwadhwa6@okaxis

SCAN TO PAY

UPI TRANSFER



99538 12886



99538 12886



99538 12886



99538 12886

PACKING Checklist



Mandatory Items

- | | |
|--|---|
| <input type="checkbox"/> Helmet | <input type="checkbox"/> Pair of socks |
| <input type="checkbox"/> Front Headlight | <input type="checkbox"/> Sunglasses or eye wear for the day and riding in a dark time |
| <input type="checkbox"/> Tail Light | <input type="checkbox"/> Raincoat / Windcheater |
| <input type="checkbox"/> Reflective Vest/ Tape | <input type="checkbox"/> Extra batteries or charger for |
| <input type="checkbox"/> Water Bottle/Sipper | <input type="checkbox"/> Cycling lights |
| <input type="checkbox"/> Pair of Shoes | <input type="checkbox"/> Mini tool kit |
| <input type="checkbox"/> Cycling gloves | <input type="checkbox"/> Cycle Tubes |

Other Essentials

- | | |
|--|---|
| <input type="checkbox"/> Small Backpack | <input type="checkbox"/> Personal Toiletries |
| <input type="checkbox"/> Jersey's | <input type="checkbox"/> Aadhar Card |
| <input type="checkbox"/> Shorts | <input type="checkbox"/> Emergency Cash |
| <input type="checkbox"/> Sweatshirt | <input type="checkbox"/> Any medicine if you are taking |
| <input type="checkbox"/> lower/ Track pant | |
| <input type="checkbox"/> T-shirts | |
| <input type="checkbox"/> Jeans | |
| <input type="checkbox"/> Slipper | |



FAQ



Q. Which type of cycles are allowed in this ride?

As this ride is designed to test your endurance so any type of bicycle is allowed. So bike on which you are most comfortable and has done long distance practice is advised to ride on.

Q. Do you provide cycle on rent, if yes then which bike you provide?

Yes, we do provide cycles on Rent. We have premium brand bikes like Merida & Polygon available for rent to make your ride experience better.

Q. Will I get the cycle according to my height for this ride?

As we have multiple cycle to offer on rent for all sizes ranging from S to XL, so you will get the cycle of right frame size for your ride.

Q. What is included in the cost of cycle rental?

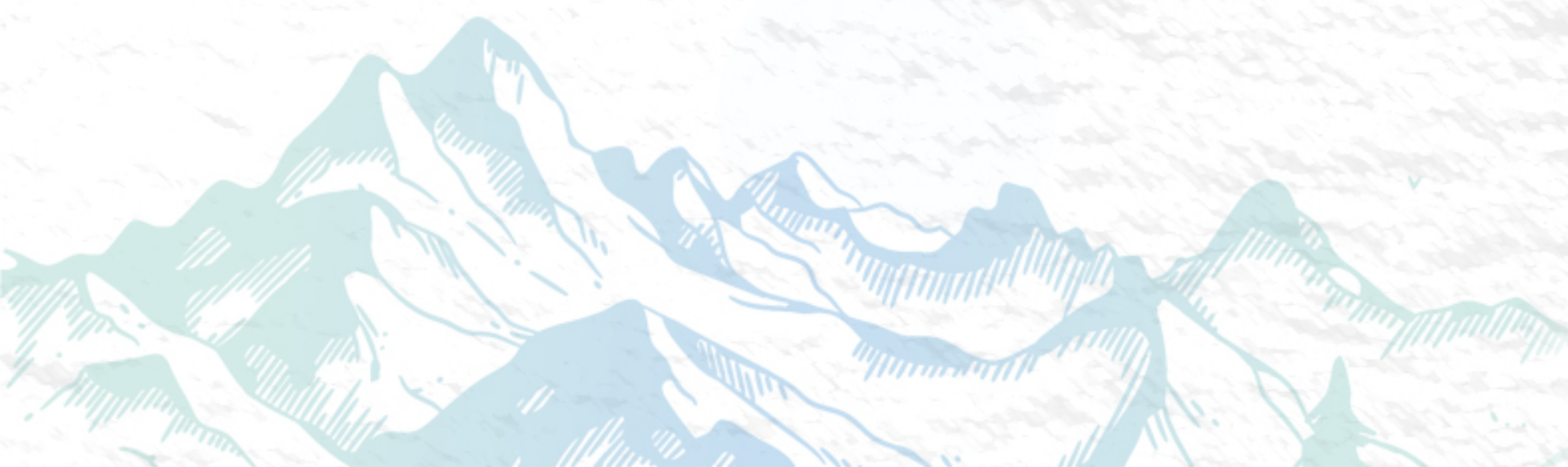
We give only cycle to ride all other mandatory items and accessories you want on cycle you have to bring yourself.

Q. I have taken a cycle on rent if any damage happens who will bear the cost?

Any kind of damage happens to cycle during the ride shall be taken care by rider himself / herself. So treat it like your own property and handle with care.

Q. I have taken a cycle on rent When will I get and where?

You will get the cycle on rent at the start of ride at starting point. If you want to have bike prior you can come and collect a day before ride starts from our Noida showroom.



FAQ



Q. Do you have any Minimum Speed Criteria for this Ride?

Yes, as it is a long endurance ride so recovery for rest day is important. To cover the maximum ride on saddle each rider has to maintain minimum average pace of 22km/hr. If you will not be able to manage this pace, no need to worry our support team will be there to pick you from Point A to Point B and you can again continue your ride from there.

Q. Do you I have to submit any medical fitness certificate for this Ride?

Yes, for all our GTO Rides we need a self-declaration about your medical health state from every participant.

Q. I have already accepted the terms and conditions do I still need to fill the waiver form?

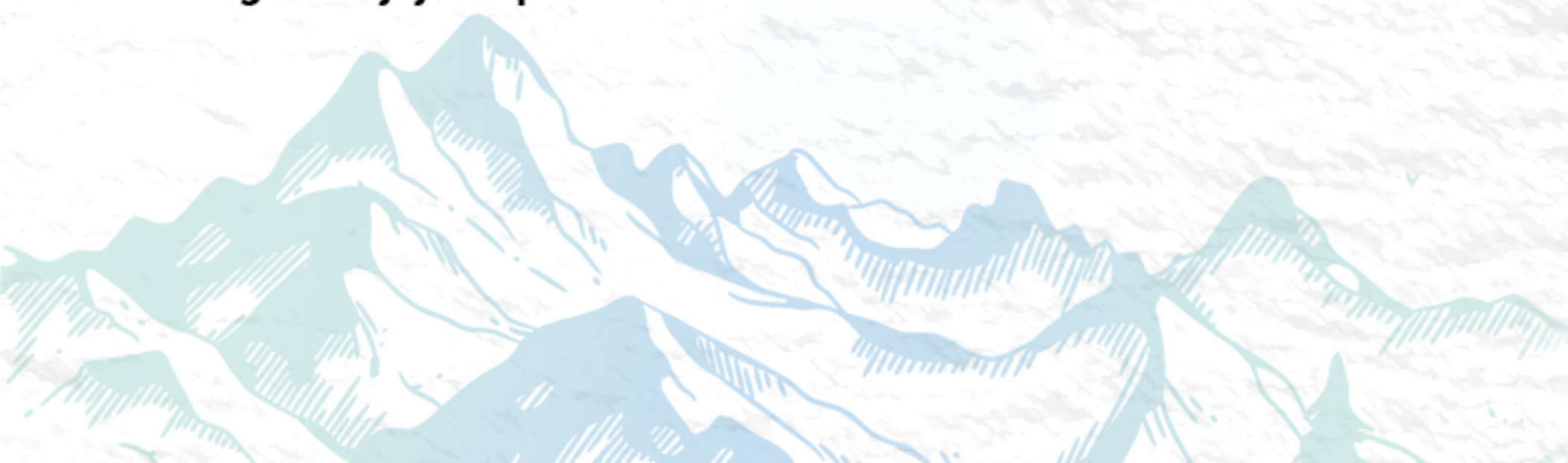
We understand at the time of registration you have accepted the terms and condition. But there is probability that due to short of time may any of the important information may got skipped to read so a hard copy of signed document is must.

Q. Can I submit the digital signed copy of Forms asked for the ride?

Yes, we accept digital signed copies also for that you need to coordinate with tour leader who will be assigned to you post your registration done.

Q. I am under 18 can I also join the ride?

Yes, you can also join the ride with the consent of your parents. You have to get a disclaimer form signed by your parents and submit it before the ride with us.



FAQ



Q. If I forgot to bring any of the mandatory things you have mentioned, will I be allowed to ride?

No, without any of the mandatory things as mentioned above you are not allowed to ride. So either bring them along or can purchase from us.

Q. Will medical support is also there for riders?

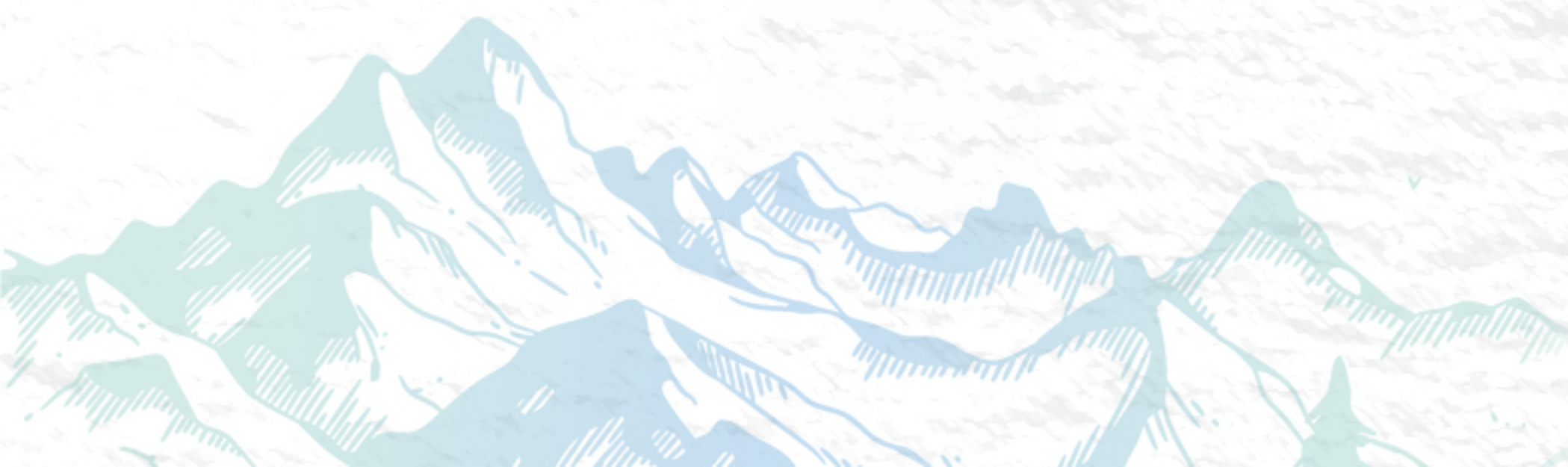
Yes FIRST-AID shall be provided immediately to the rider as and when needed. If in case any critical emergency rider needs to visit the hospital that shall be taken care of by us. But the expense of the hospital shall be taken care of by rider only.

Q. Does tour cost cover our medical insurance also?

No, tour cost doesn't include your medical insurance.

Q. What are the safety rules for this Tour?

- 1) It is compulsory to wear a helmet for the entire duration of the ride. Riders without a helmet will not be permitted to ride.
- 2) Every rider must use their own lights for riding in dark times, bicycles must be equipped with front and rear lights attached firmly to the vehicle. Lights must be fully functional. If lights will not be working you are not allowed to ride.
- 3) All riders must wear a reflective vest that clearly places reflective material prominently on the front and back of the rider. If you will not be wearing reflective vests you are not allowed to ride.



FAQ



- 4) This ride is open to any amateur cyclist regardless of his or her cycling affiliations. Riders (under the age of 18) must get a consent form signed by his or her parent or legal guardian.
- 5) Each rider must be covered by liability insurance, either by a group policy or by a personal policy.
- 6) Our Sikh brothers – We have RELAXED THE MANDATORY HELMET RULE for Sikh Riders. But the rider must either wear a full Turban and not just a Patka.

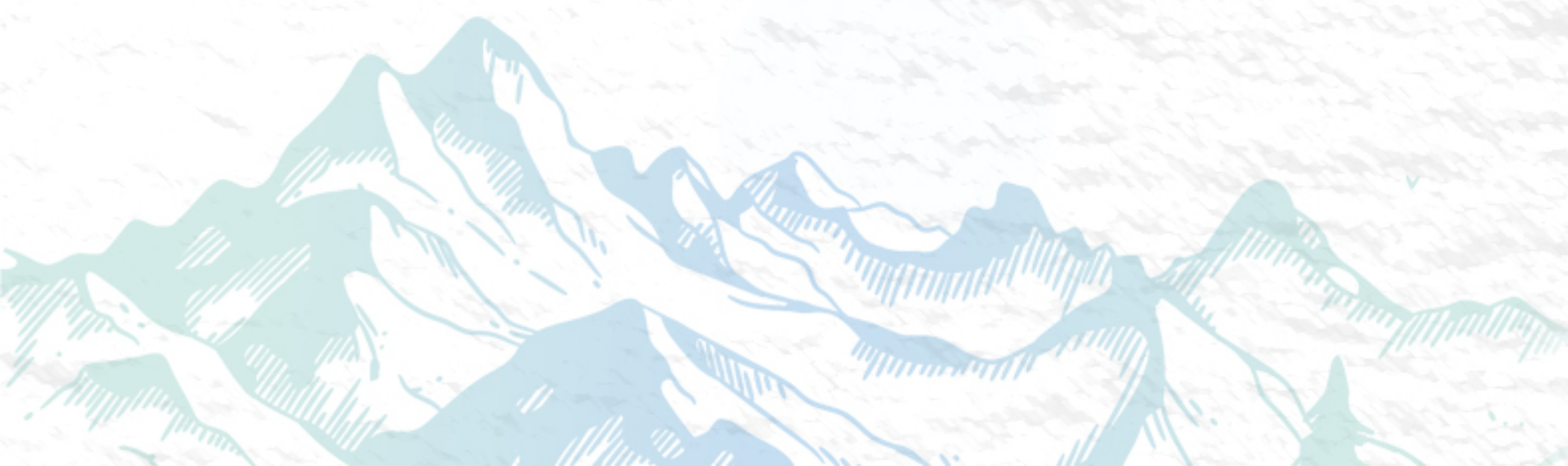
Q. I need to know in detail about your anti-COVID-19 Policies/guidelines for the travel?

We follow everything that can possibly decrease your chances of contracting corona virus. Guidelines are as follows:

Here are some essential items that you must carry while traveling Face Masks Hand Sanitizers

As we will stay in hotels, It is advisory to carry your own toiletry kit. This way you can maintain proper hygiene by using your own products. Also, you can keep yourself safe by using your personal towels.

To keep the locals safe, it is advisable that travelers should maintain distance with the locals.



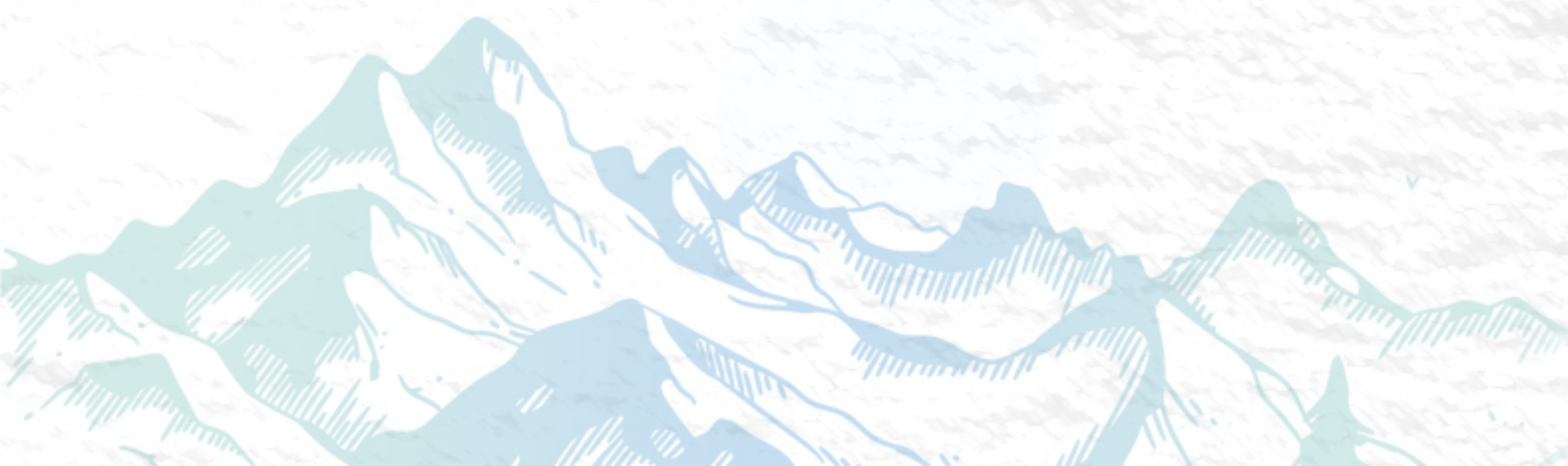
FAQ

Q. Do I need to carry any Covid Test Report?

With at present govt policies updates no, if in future any change of policy happen we shall update you and then accordingly actions has to be taken by you.

Q. What is your cancellation & refund policy?

Please check below shared link <https://dare2gear.com/terms-condition/>.



MUST *Know*



- ☀ **Adherence to Tour Program:** Please adhere to the tour schedule. There will be no refunds for late arrivals, early departures, or unused tour services.
- ☀ **Liability Disclaimer:** We are not liable for costs arising from accidents, theft, or changes due to natural disasters, government orders, strikes, political disturbances, disease-related issues, or adverse weather conditions.
- ☀ **Handling Unexpected Costs:** Any unexpected expenses or changes due to the mentioned reasons must be borne by the participants and settled directly with our Point of Contact (POC) or trip captain.
- ☀ **Additional Charges:** Additional charges, such as Early Check-in, Late Check-out, or room view requests, are subject to availability and must be settled directly with the hotels or service providers.
- ☀ **Limitations in Remote Locations:** We strive to provide the best experience, but limitations in remote locations may affect our offerings. Your understanding and cooperation are appreciated.
- ☀ **Bus Service:** The bus service between Delhi and the base is managed by a third-party vendor. In case of a breakdown, we will arrange a backup bus as soon as possible.
- ☀ **Respect for Nature and Communities:** Let's cherish our adventures by respecting nature, communities, and trails. Remember, your belongings are your responsibility.
- ☀ **Making Adventures Memorable:** Respect the places we visit and the locals we meet to make our adventures unforgettable. Keep your gear close, as we cannot replace lost items.
- ☀ **Room Sharing Details:** Sharing a room with 3 people? We provide cozy mattresses for comfortable rotation during sleep.
- ☀ **Drafting is Strictly Prohibited:** Drafting during the ride is not allowed. Any participant found drafting will be immediately disqualified and will not be permitted to continue further in the ride.